



**NEVER
STOP
BUILDING**



WHEN
WE
SAY

FABCON PRECAST

WE'RE TALKING ABOUT A COMPANY THAT HAS BEEN LEADING AN INDUSTRY SINCE THERE'S BEEN AN INDUSTRY TO LEAD.

Fabcon Precast wall panels possess the speed, performance and versatility to impress building owners, architects, and general contractors alike. We've built a rock-solid reputation since 1971 by working with and satisfying powerful organizations with an eye for cost-effective growth.

Goya Foods | JERSEY CITY, NJ

1972

Fabcon introduces its first insulated wall panels, aggregates and finishes.

1995

Fabcon purchases Indiana/Ohio facilities to better serve Great Lakes customers.

1999

Fabcon expands its Savage, Minnesota facility.

2000

Fabcon goes east. Pennsylvania plant constructed.

2002

Fabcon develops VersaCore wall panels which are lighter, more energy efficient, and easier to install.

2007

VersaCore+Green is introduced, further raising the standard in recycled content.

2013

Fabcon adds a new wide bed to its plant in Mahanoy City, Pennsylvania.

2015

The company sets sights south and adds its fourth plant in Pleasanton, Kansas.

NOW

Over 47 years later, Fabcon Precast continues to shape and expand how precast concrete is perceived. It's time for serious building professionals to reconsider precast.

BETTER, STRONGER, FASTER

WE'RE TALKING ABOUT MORE
THAN JUST OUR PANELS.

MUCH ENGINEERING

Fabcon's structural plans are designed to meet demanding loads without the added time and cost of other construction methods. Fabcon's engineering and drafting departments partner closely with your structural team to ensure that our panels match the specifications of your project. Our engineering plans interface directly with our automated manufacturing process to ensure openings, connections and finishes all meet MNL-116 and -117 quality tolerances. The combined material savings and production efficiencies pay dividends throughout the construction cycle.

MORE MANUFACTURING

Our ISO-Certified and PCI-Certified manufacturing facilities and decades of expertise enable us to deliver a broad offering of load-bearing building envelope solutions and architectural finishes. Fabcon's manufacturing and quality technicians are dedicated to continuous improvement throughout every phase of production. Each year, in all of our plants, Fabcon invests in equipment and automation innovations designed to meet the growing needs of our customers. And above all, safety is our #1 priority.

THAN LOGISTICS

So much more than loading and hauling. Fabcon's yard, transfer, and field operations are pivotal to the success of your project. Yard operations go well beyond storage to include additional quality inspections, finish treatments, as well as delivery sequencing of panels to ensure your building is erected in the quickest manner. Our preconstruction experts will create an on-site delivery and staging strategy so site operations flow smoothly. Fabcon's integrated approach guarantees quality while saving time and reducing cost.

PANELS INSTALLATION

Fabcon's 30 crews of PCI-Certified Erectors are expertly trained and laser focused. The majority of our field foremen have worked for us for over 20 years. Their experience and leadership enable crews to set 20-35 panels per day on average. Installation methods are matched to the specifications of the building foundation, and structural design and may be freestanding, temporary shore or permanent steel. Fabcon's integrated approach ensures that efficiency and value are built into every project, regardless of its size.

BUILT TO ORDER: FABCON GIVES YOU OPTIONS & FLEXIBILITY



RuB | SHAKOPEE, MN

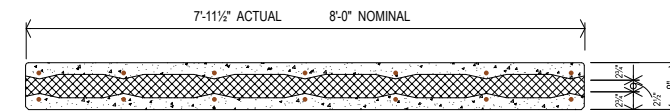
Today's precast panels are a far cry from the hollow-core panels first introduced in the early 1970s. Fabcon nearly reinvented the category in 2001 with the introduction of VersaCore panels. Since then Fabcon has refined and re-engineered panel performance profiles to match the needs of our customer.

Our expanded manufacturing capabilities offer you more choices, more flexibility and higher performance. Our panels can reach heights of 73 feet* or more, variable R-values up to R-28.2 and panel widths up to 13'6" depending on the plant of origin.

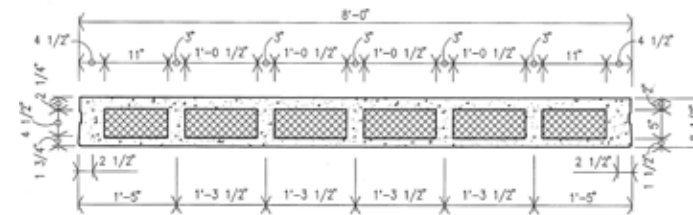
	VersaCore+Green	VersaCore+Green Sandwich	Edge
Max Height*	Up to 73'	Up to 73'	Up to 35'
Widths	20"–13'6"	20"–13'6"	3'–8'
Sound Attenuation (STC)	50–51	52	52
R-Value	R-13.6 and up	R-28.2	R-16.2
Concrete Strength	7,000–9,000 psi	7,000–9,000 psi	7,000–9,000 psi
Recycled Content	Up to 58%	Up to 58%	Up to 58%
Fire Rating	Up to 4 hours	Up to 4 hours	Up to 2 hrs 20 min

*Maximum heights require special structural and engineering considerations. Ask your sales engineer for details.

Edge™ FABCON PRECAST



Fabcon's Edge provides customers with a panel that meets the market need for edge-to-edge insulation, with two load-bearing faces and an impressive level of thermal performance. Edge is the perfect partner for Fabcon's other panels, giving you the flexibility to create a hybrid envelope with R-value-specific zones custom suited to people, storage or manufacturing.

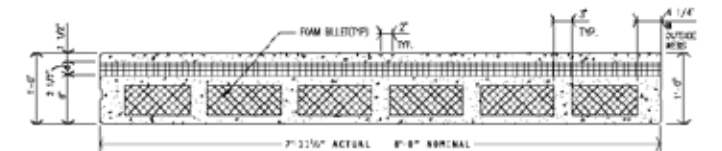


VersaCore+green™ FABCON PRECAST

VersaCore+Green is our standard panel. Packed with equal parts performance and value, it is an ideal precast panel solution when the additional thermal performance and cost of a sandwich panel is unnecessary. Still highly capable thermally, VersaCore+Green delivers R-values ranging from a LEED-friendly R-13.6 in an 8-inch thick panel up to R-20.2 in a 12-inch thick panel

VersaCore+green sandwich™ FABCON PRECAST

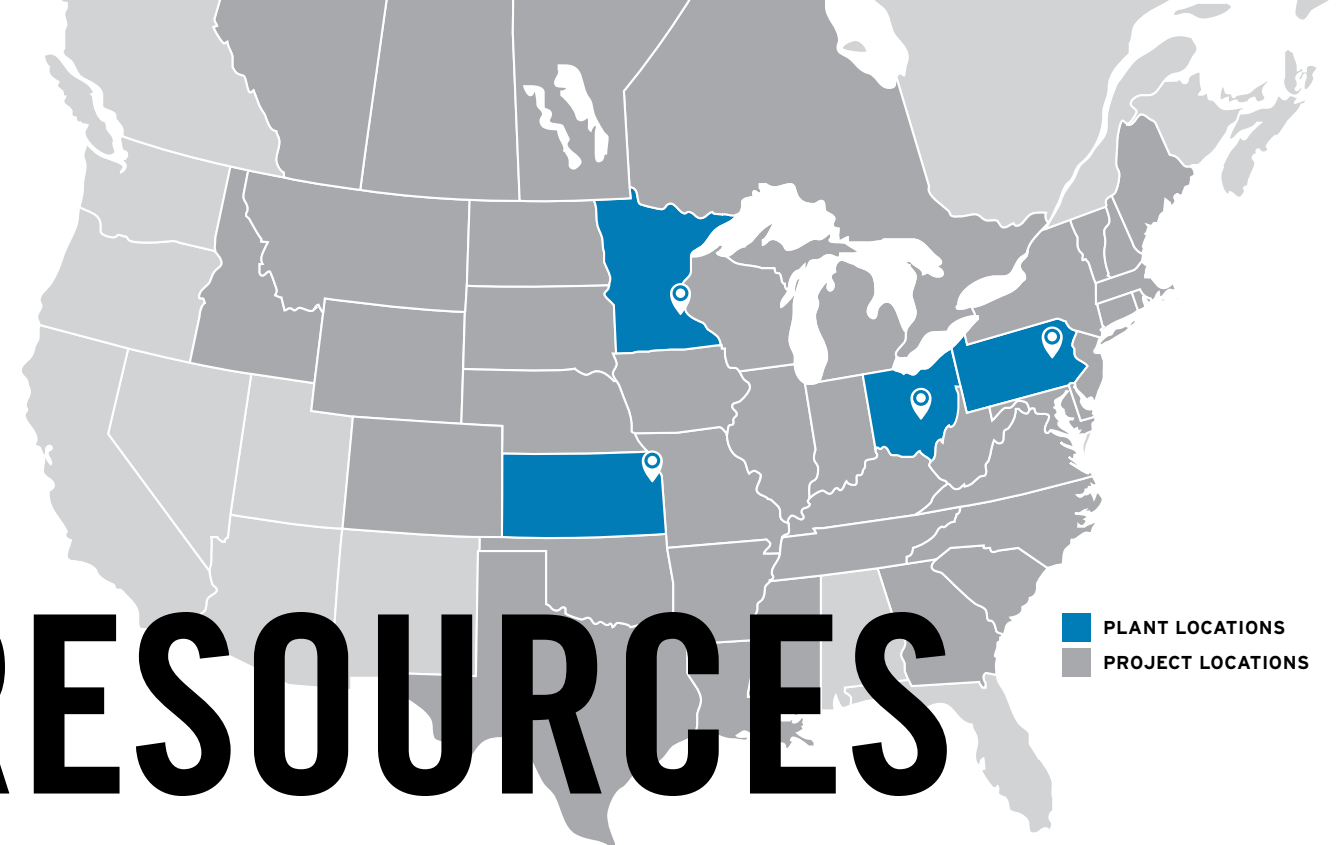
VersaCore+Green Sandwich panels provide outstanding thermal performance. Their continuous 2.5-inch layer of insulation increases the static R-value by as much as 250% over many construction methods including site-cast panels and CMU construction. Sandwich panels are the only standard panels that have a 4-hour fire rating.



Our state-of-the-art manufacturing plants are PCI-Certified and have a combined annual manufacturing capacity of more than 17 million square feet.

REACH AND

RESOURCES



■ PLANT LOCATIONS
■ PROJECT LOCATIONS

	MN SAVAGE	OH GROVE CITY	PA MAHANOH CITY	KS PLEASANTON
Established	1971	1985	2001	2015
Size	126,244 ft ²	118,217 ft ²	97,030 ft ²	30,175 ft ²
MNL-117	YES	YES	YES	NO
Beds	4: 8' x 680'	2: 8' x 800'	2: 8' x 800'	2: 12' x 257'
	1: 12' x 800'	1: 12' x 320'	2: 13'6" x 300'	

Four strategically-placed manufacturing facilities give Fabcon an effective span of delivery that includes most everything east of the Rockies and north of the Gulf Coast. Fabcon has delivered and installed our product in 38 states, 4 provinces and the District of Columbia. Regardless of which sales office manages your project or which plant produces it, Fabcon Precast delivers the value, performance, and service that keeps progressive brands such as Walmart, UPS and Frito-Lay coming back again and again. Each of our plants

is a precisely-controlled environment built to ensure proper curing and consistency. Most panel designs can be produced in thicknesses of 8", 10" and 12", enabling you to right-size the thermal performance of your structure. Each location is staffed to design, manufacture and install our wall panels, including the connections. By working closely with architects, general contractors, and structural engineers early in the process, Fabcon's involvement can help create efficiencies that save everyone time and money.



CUSTOM RAKE PATTERNS



PAINTED STEEL FORM



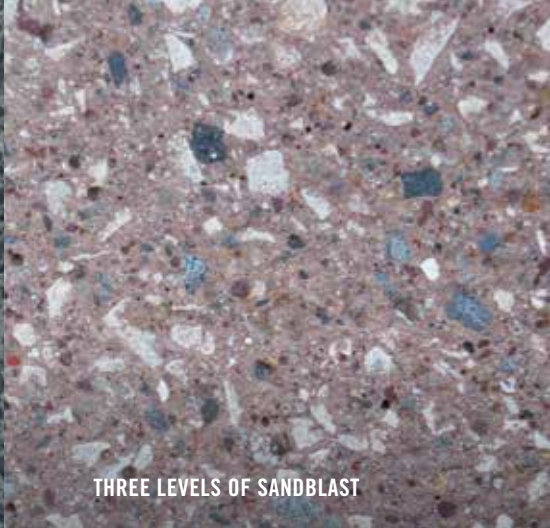
RUNNING BOND IMPRINT



CUSTOM BANDS



WARM TO COOL PIGMENTS



THREE LEVELS OF SANDBLAST



CUSTOM PIGMENTATION

ENDLESS POSSIBILITIES

We're colorful. We know what you're thinking—precast in any color you want, as long as that color is gray. But the fact is Fabcon Precast might just give a greater range of color than you think. By adjusting four very basic components (cement, aggregate, tinted pigments, matrix) Fabcon panels afford you a wide spectrum of color depth and nuance.



South Washington Park | PISCATAWAY, NJ

FABCON CREATED 4 CUSTOM FINISHES AS UNIQUE AND DISTINGUISHED AS THE CLIENT'S BEER.

Wisconsin-based brewery Ale Asylum's 7,500-barrel-a-year capacity paled when compared to public demand for their beer. Owners Otto Dilba and Dean Coffey unfurled a bold plan to build a 45,000 square-foot facility capable of rolling out six times as much product annually. Fabcon's load-bearing panels eliminated the need for perimeter columns and created more usable space for their brewery equipment. In addition, with panel R-values of R-24, wide temperature swings are avoided and heating and cooling costs are kept in check.

Dilba and Coffey are particular when it comes to making their beer, and they were no less particular when it came to the aesthetics of the new facility. Custom blends of aggregates, sealers, tints, and a unique aggregate wash process were all used to achieve very specific visual results. A local graffiti artist also contributed a series of murals on the panel interiors of the taproom. In the end, Ale Asylum moved into a new facility every bit as distinct as the beer they brew.



Ale Asylum Brewing
INTERIOR WALL



Ale Asylum Brewing | MADISON, WI

Ale Asylum | MADISON, WI

The Ale Asylum construction team challenged Fabcon to develop not one or two custom finishes, but four. Like master brewers, Fabcon carefully blended aggregates, pigments, and cement were combined to create four totally unique finishes.

ARCHITECT

Transcend Architects & Engineers

CONTRACTOR

Construction Services

SQUARE FOOTAGE

45,000

FINISH

Exposed Aggregate
Custom blend, custom tint

Kutol Products Company is a privately-held manufacturer of cleaning products with a proud history spanning more than 100 years. With the completion of the LEED Silver headquarters, President Joe Rhodenbaugh completed a plan that was more than two years in the making. The 160,000 square foot facility houses corporate offices, research and development, manufacturing, and distribution operations. Using Fabcon's Versacore+Green panels with their R-9.6 thermal performance and 58% recycled content made perfect sense—they not only added capacity, they increased efficiency and reduced operating expenses. Although the new facility has dramatically increased Kutol's building volume, the company has maintained the operating costs of their much smaller original building.

ARCHITECT

Wentz Design

CONTRACTOR

Cincinnati Commercial Contracting

ENGINEER

Smith Roberts and Associates

FINISH

Steel Form Finish with Reveals

SQUARE FOOTAGE

45,000

**SQUEAKY CLEAN: KUTOL IS A
WORLD-CLASS ORGANIZATION
WITH A LEED® SILVER
CERTIFIED HEADQUARTERS
AND A REPUTATION OF GOLD.**



**A FREE ONLINE TOOL
FROM AN INDUSTRY LEADER**



**INTRODUCING
SKETCHBOARD™
BY FABCON PRECAST**

Sketchboard™ is Fabcon's proprietary resource curation tool. Save project photos, links, technical documents and articles for your future reference from any device.

**Start filling your personal
Sketchboard today:
→ [MySketchboard.com](https://www.mysketchboard.com)**



SALES OFFICES

Minneapolis, Minnesota
Columbus, Ohio
Allentown, Pennsylvania
Kansas City, Kansas

MANUFACTURING PLANTS

Corporate & All Plants | 800-727-4444
Savage, MN | 952-890-4444
Grove City, OH | 614-875-8601
Mahanoy City, PA | 610-530-4470
Pleasanton, KS | 913-937-3021

FABCONPRECAST.COM | 800-727-4444

PRECAST WALL SYSTEMS - ENGINEERING - MANUFACTURING - INSTALLATION

©2018 Fabcon Precast
RV0618SF