



Better. Stronger. Faster.

FINISHES & CAPABILITIES



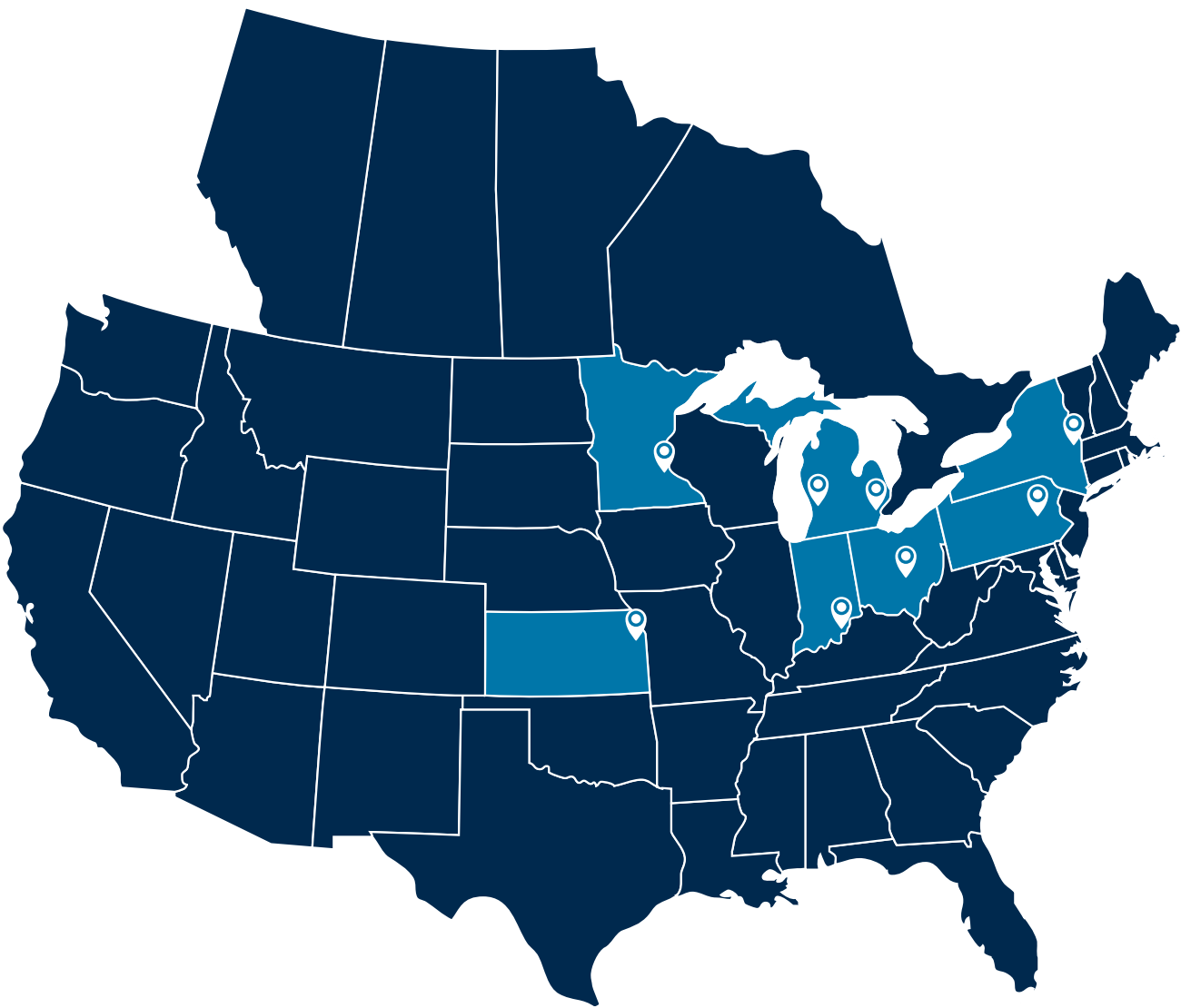


**WE PROVIDE PRECAST
CONCRETE SOLUTIONS
AND SERVICES THAT SOLVE
PROBLEMS FOR THE MODERN
CONSTRUCTION INDUSTRY.**

Fabcon’s precast panels are available in a large variety of colors and finishes. When you consider the scope of naturally-occurring aggregates, pigments and custom finish capabilities, the only limitation is your own imagination.

Fabcon is an expert in all things precast and can be instrumental in helping you get started with your next project. If at any time you have questions, we encourage you to reach out to your Fabcon Sales Engineer.

If you are not currently working with a Fabcon Sales Engineer, please call (800) 727-4444.



**OUR EIGHT LOCATIONS
MEAN YOU HAVE OPTIONS**

Our strategically-located manufacturing facilities give Fabcon an effective span of delivery that includes most everything east of the Rockies and north of the Gulf Coast. We’ve delivered and installed our product in 46 states, 4 Canadian Provinces and the District of Columbia.

IN THIS GUIDE:

ABOUT FABCON.....03
END-TO-END PROCESS.....04
KEY MARKETS.....06
PANEL OPTIONS.....09
PIGMENT OPTIONS.....10
INTERIOR FINISHES.....12
EXTERIOR FINISHES.....14



END-TO-END CAPABILITIES

You get the biggest benefit when we're a part of your project team from the start. From inception to installation, our solutions are designed to support structural and architectural precast solutions.



SALES CONSULTATION:

From day one, we partner with our clients to offer customized solutions that meet project demands.

PROJECT MANAGEMENT:

All projects are fully managed by our in-house team from engineering through installation to increase accuracy, reduce risk and ensure the best results for our customers.



DESIGN:

Our engineering and drafting teams partner closely with the structural and architectural teams to match our design with projects specifications.



MANUFACTURE:

Our state-of-the-art, climate-controlled manufacturing facilities are PCI-certified, ensuring accuracy and quality on every project.



LOGISTICS:

Our yard operations go beyond storage to include additional quality inspections and finish treatments as well as delivery sequencing to ensure projects are constructed quickly.



INSTALL:

Our crews of PCI-certified installers are expertly trained. Installation methods are matched to the project and site-specific requirements.

ENDLESS SOLUTIONS FOR ALL BUILDING TYPES

From corporate headquarters to grocery stores, manufacturing facilities to ice arenas, car dealerships to data centers... Fabcon has rock-solid solutions for your next project.



WAREHOUSE



OFFICE



ENTERTAINMENT



MANUFACTURING



RETAIL



PARKING



HOTEL



DATA CENTER



COMMUNITY/PUBLIC



EDUCATION



MULTI-FAMILY

BUILT TO ORDER: GIVING YOU OPTIONS AND FLEXIBILITY

Our manufacturing capabilities offer the most choices and flexibility in the precast industry. Panels can reach heights of 73 feet or more*, variable R-values up to R-28.2 and panel widths up to 15’**.

*Maximum heights require special structural and engineering considerations ** Depending on the plant of origin

ICON KEY:

Throughout this guide we’ve indicated form side finishes, top side finishes and relative cost with the following icons:

↑

TOP SIDE FINISHES

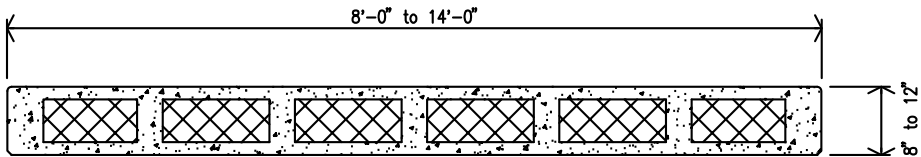
↓

FORM SIDE FINISHES

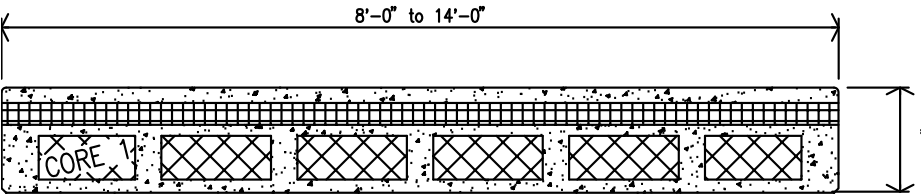
\$\$

EXPENSE LEVEL

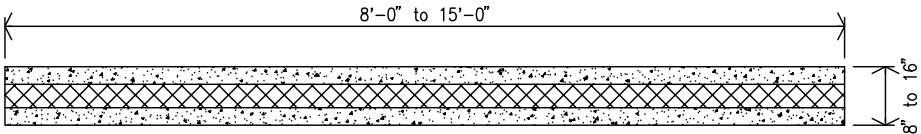
TYPES OF WALL PANELS:



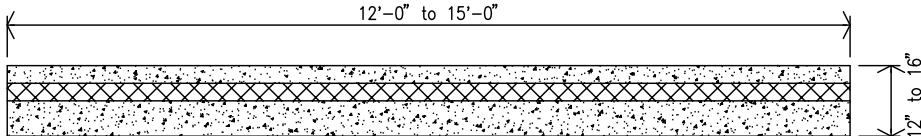
VersaCore+ Green: Packed with equal parts performance and value, VersaCore is an ideal precast panel solution.



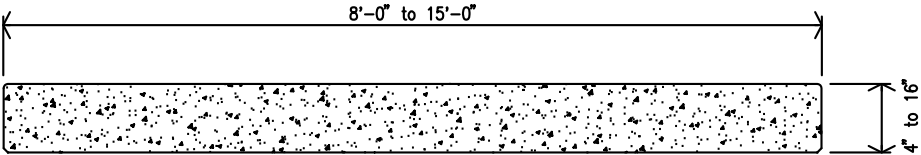
VersaCore+ Green Sandwich: With peak thermal performance, these panels have a continuous 2.5-inch layer of insulation, boosting the static R-value by up to 250% compared to other building methods.



Composite: These panels provide edge-to-edge insulation, support larger openings, and deliver top level architectural finishes.



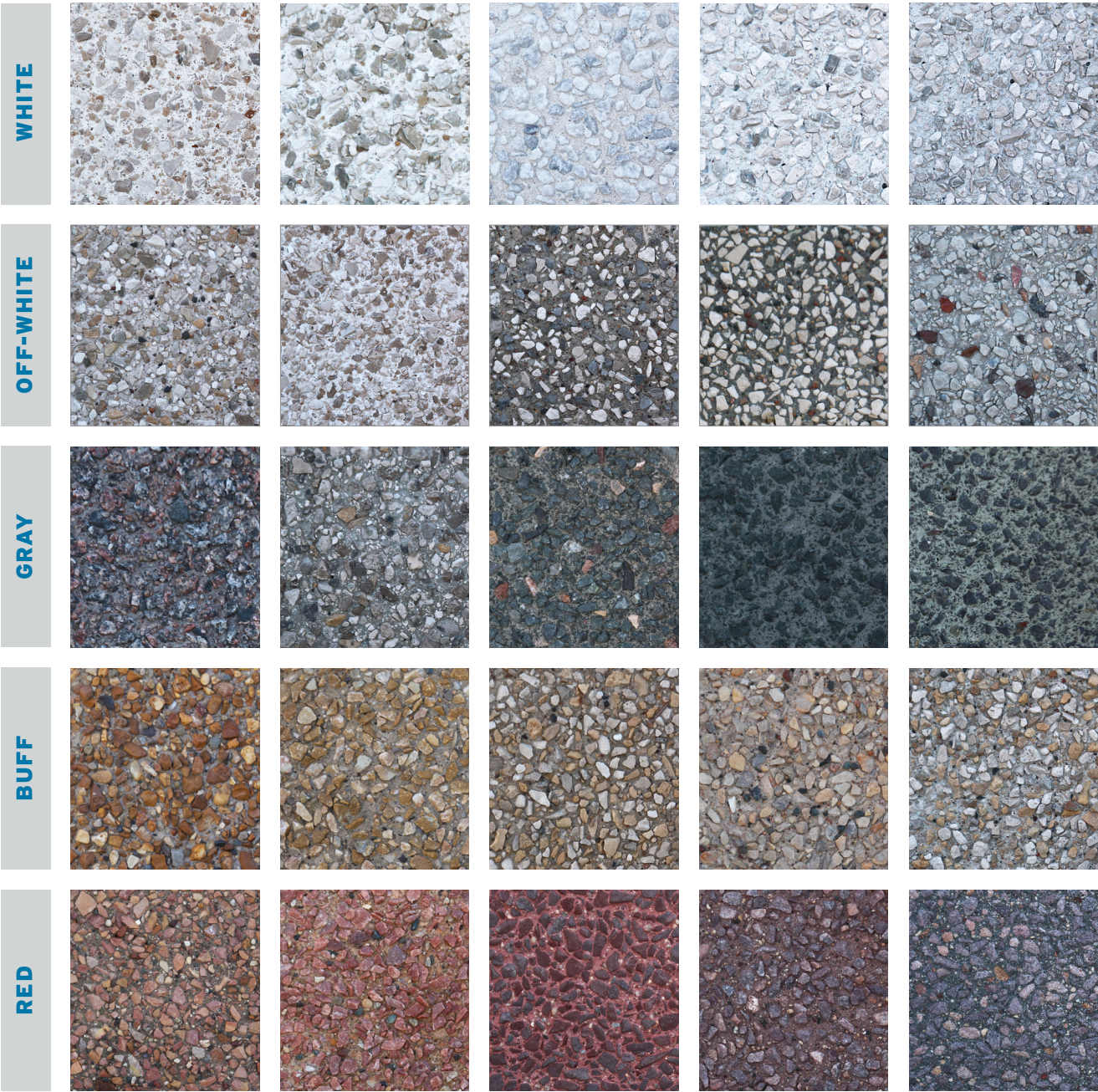
Non Composite: A structural system with a thicker structural wythe, a layer of continuous insulation, and a thinner concrete face.



Solid: Solid walls allow for quick installation for load-bearing structures such as stairwells, elevator shafts, or interior shear and demising walls without insulation.

EXPLORE LIMITLESS COLOR OPTIONS

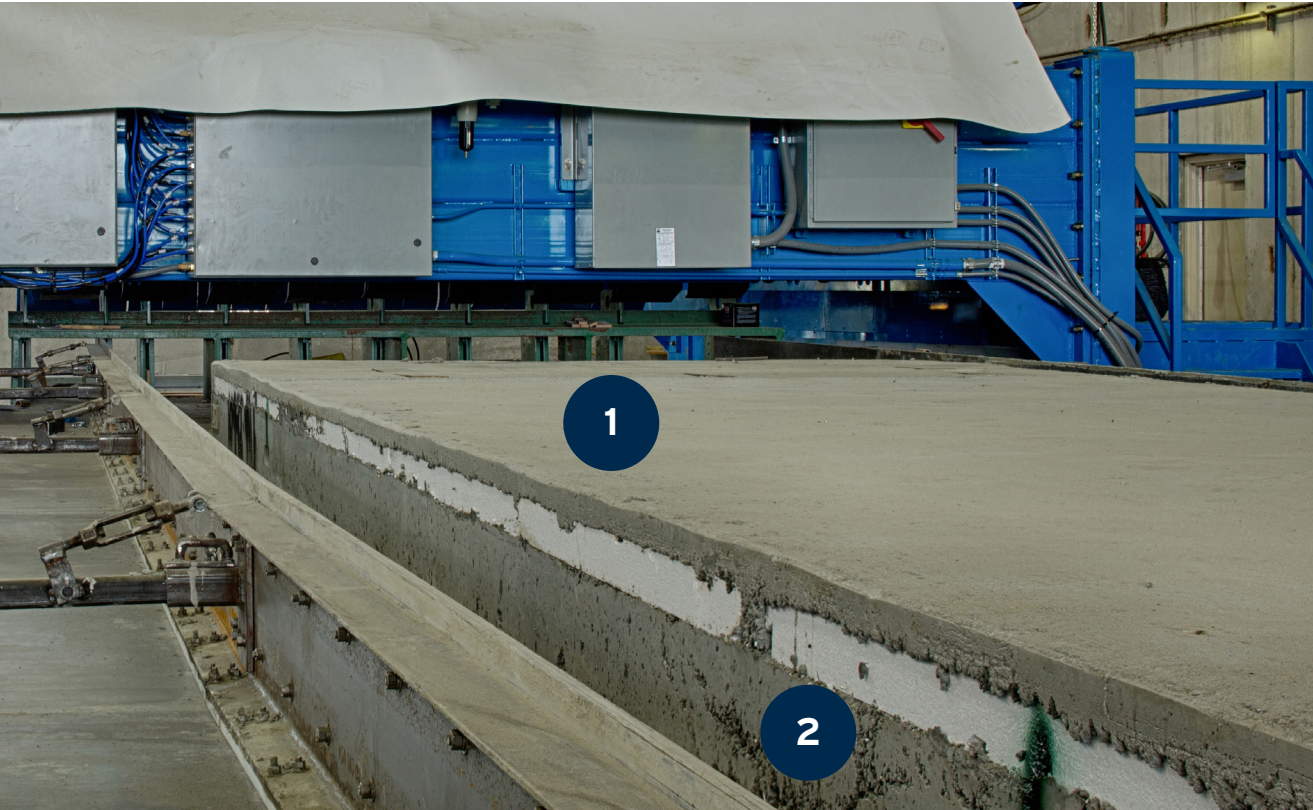
Our panels provide a broad range of color options through combining of aggregates, sands, cement types and pigments. Color can also be manipulated through varying types of finish methods. The images below are meant to spark inspiration, not to display specific available colors.



THERE ARE TWO SIDES TO EVERY STORY

1. TOP SIDE

When the exterior finish is specified as a “top side,” finish, with rib, rake, imprint, and exposed aggregate, as examples, the interior building finish is then created on the “form side” of the panel. A major advantage of the “form side” of the panel being the interior finish, is that, with little preparation the surface can be painted or otherwise directly finished. Form side interior finish are more reflective and cleaner than typical top side interior finishes, such as broom or trowel.



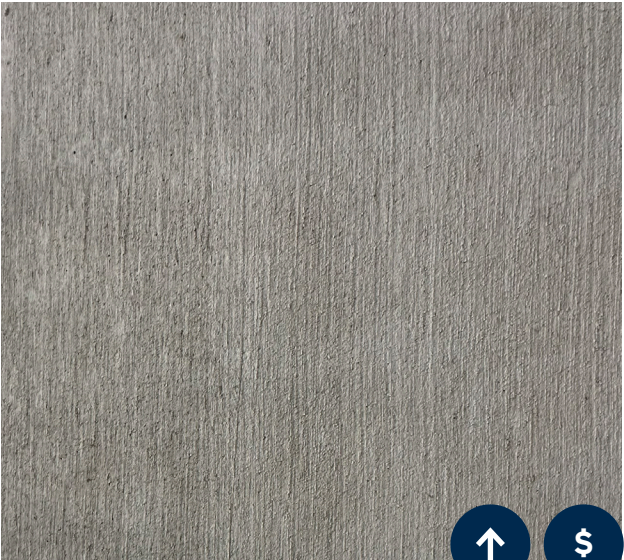
2. FORM SIDE

If the project design calls for a “form side” finish at the exterior, then the interior finish is created on the “top side” of the panel in the casting process. In this case, there is a choice of a broom finish or various levels of troweled finishes. Trowel finishes include, at increasing cost, our standard float, soft trowel and hard trowel.

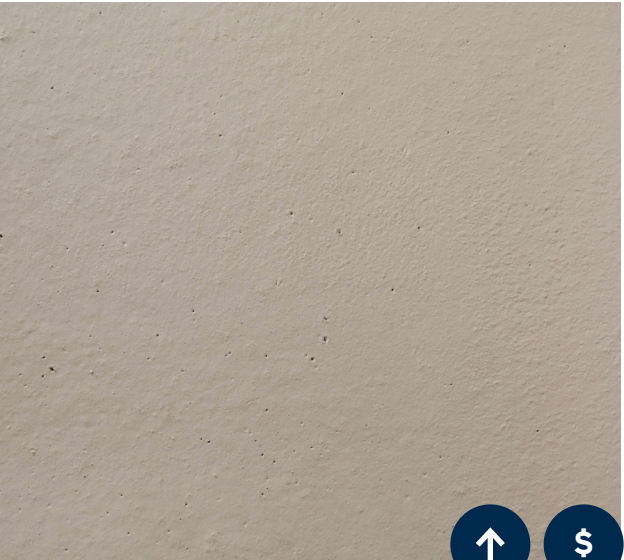
INTERIOR FINISHES

From the beginning, exterior finishes and the structural and thermal performance attributes of structural precast have garnered much of the attention.

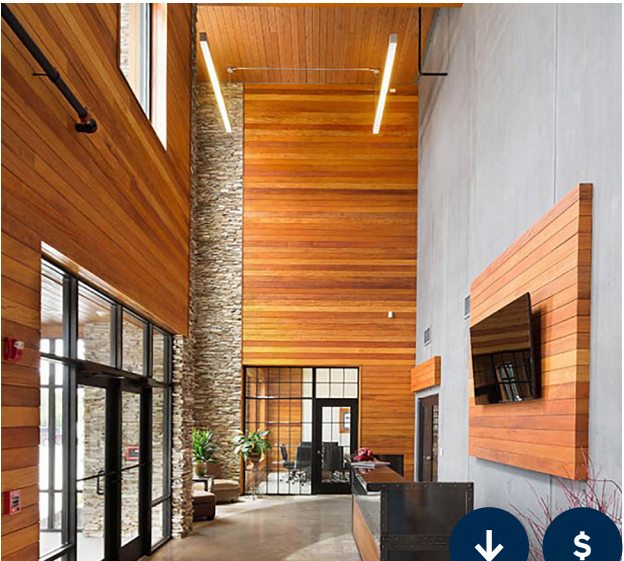
However, when choosing a finish, you must take into account the finish on both the interior and exterior of the panel. The interior finishes of precast concrete walls are a critical aspect of both aesthetics and functionality.



Broom



Float



Steel Form



Steel Form



Formliner



Hard Trowel



The exterior finishes of panels are important in shaping the appearance of a structure. Precast offers remarkable versatility in exterior finishes, accommodating an array of architectural styles and functional demands.

EXTERIOR FINISHES

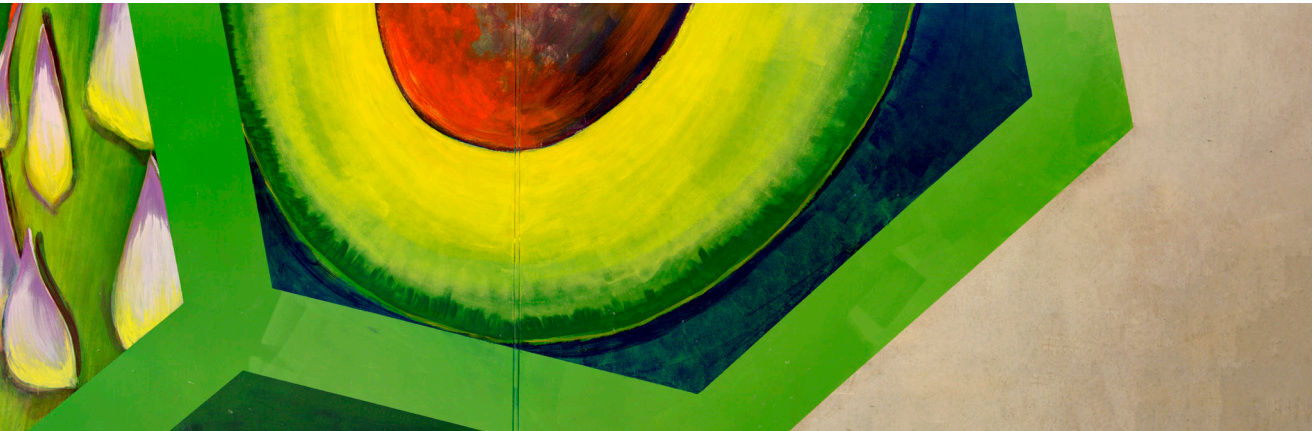
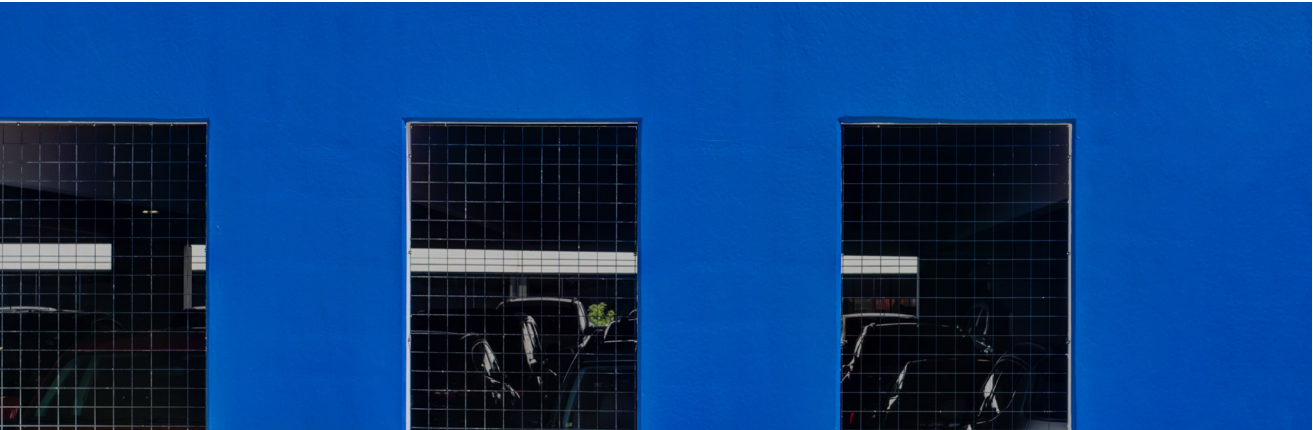


STEEL FORM PAINTED FINISH

The steel form finish is the surface of the form. The process creates a flat, smooth surface. Painting the steel form finish is one of the most economical finish options. You can utilize a large range of color and use multiple colors on the same project. Paint is applied in the field by others.



SPERO ACADEMY | MINNEAPOLIS, MN

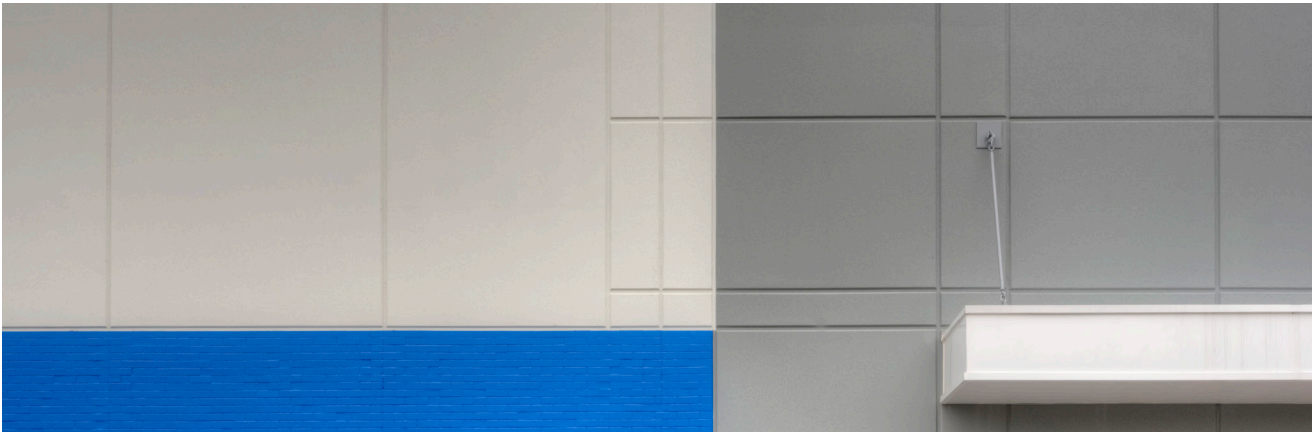


STEEL FORM PAINTED FINISH WITH REVEALS

Reveals can be added to the steel form finish to create added architectural features with little added cost.

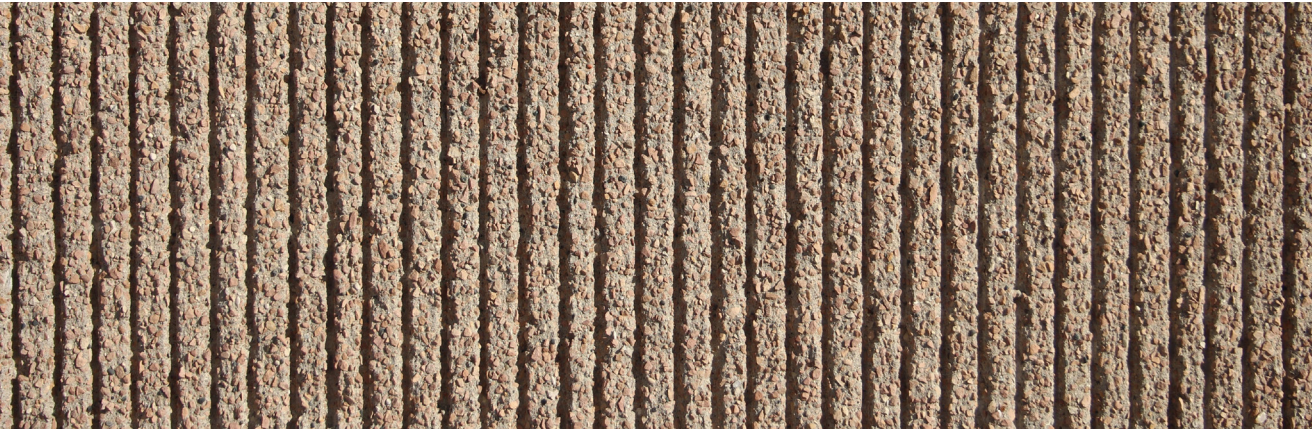


PREMIER MARINE | BIG LAKE, MN



TOP SIDE EXPOSED AGGREGATE FINISH

The top side exposed aggregate is the most cost effective way to achieve a low maintenance exterior finish. A chemical retarder is applied to slow the hydration of the top layer of cement. After curing, the panel goes through a washing process, exposing the aggregate in the finish, creating a permanent color from the natural stone. This method results in the aggregate appearing randomized and with an etched appearance. Bands may be created with score lines and colors can be enhanced with the use of field applied tinted sealers.



JOHNSON CONTROLS | YORK, PA

RAKE FINISH

Grooves can be raked into the top of the panels during the casting process and can be either natural finish or exposed aggregate. Rake finishes come in a variety of widths.



PREMIER MARINE ENVISION | BIG LAKE, MN



STANDARD RAKE:

The standard rake finish creates vertical striations 2” on center, which results in a general vertical finish.



WIDE RAKE:

The wide rake finish creates vertical striations 3” on center which results in a general vertical finish.



RANDOM RAKE:

The random rake finish creates vertical striations of varying widths on center which results in a general vertical finish and de-emphasizes the caulk joints.

RIB FINISH

Ribs are extruded onto the top finish of the wall panels during the casting process. Ribs can be either natural finish or exposed aggregate. Rib finishes come in two heights as well as two width patterns.



SHAKOPEE ICE ARENA | SHAKOPEE, MN



UNIFORM:

Ribs are 2.5” wide at the base and 1.5” high with a 3.25” flat area between the ribs.



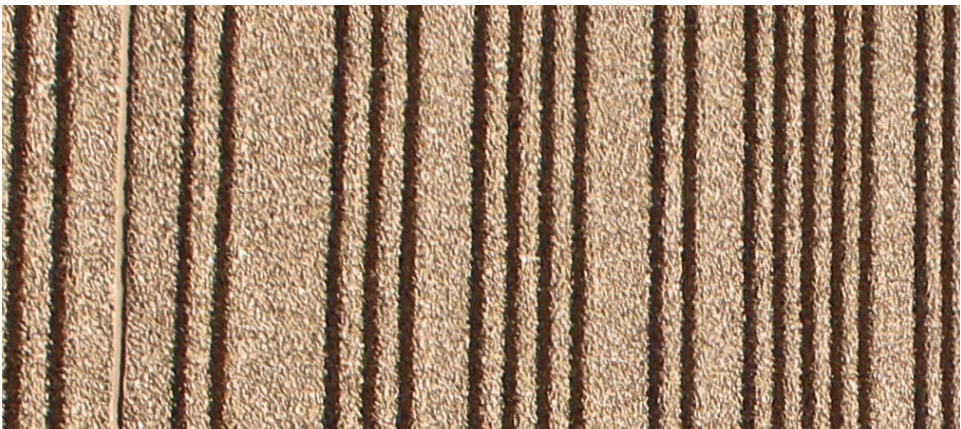
UNIFORM LOW:

Ribs are 1.75” wide at the base and .75” high with a 3.25” flat area between the ribs.



RANDOM:

Ribs are 2.5” wide at the base and 1.5” high. Flat area between the ribs varies to create the random pattern and de-emphasize caulk joints.



RANDOM LOW:

Ribs are 1.75” wide at the base and .75” high. The random low rib uses the same random spacing as the random rib.

NOTE: CUSTOM RIB PATTERNS CAN BE DEVELOPED TO MEET YOUR PROJECT NEEDS

IMPRINT FINISH

The imprint finish is applied to the top face of the panel during the casting process. Imprints are available in a variety of patterns, to simulate block, stacked stone or brick. Imprints can be applied to natural gray or exposed aggregate surfaces. Imprint finish is the most economical way to replicate the appearance of block or brick.



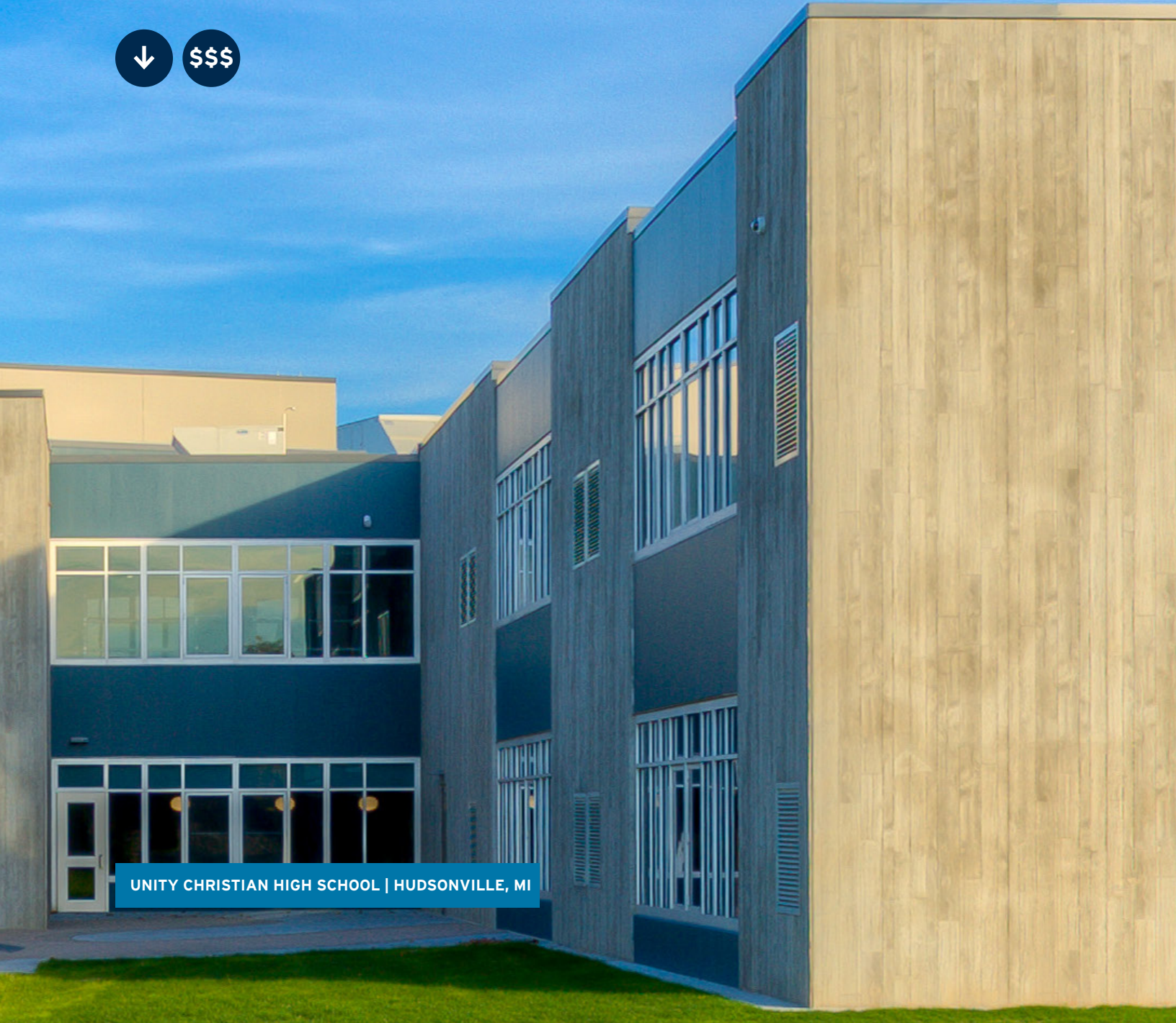
THE HOME DEPOT



NOTE: CUSTOM IMPRINT PATTERNS CAN BE DEVELOPED TO MEET YOUR PROJECT NEEDS

FORMLINER FINISH

Formliners can be used to generate a multitude of patterns and textures. The patterns are limitless, but some of the most common are brick and block patterns, wood texture, a variety of rib patterns, or as a mold to cast thin brick into the precast. They can be used for the whole building, on selected individual panels, or even as accents to parts of panels. Consult with your Fabcon Sales Engineer for more details of the limitless possibilities when using formliner on your project.



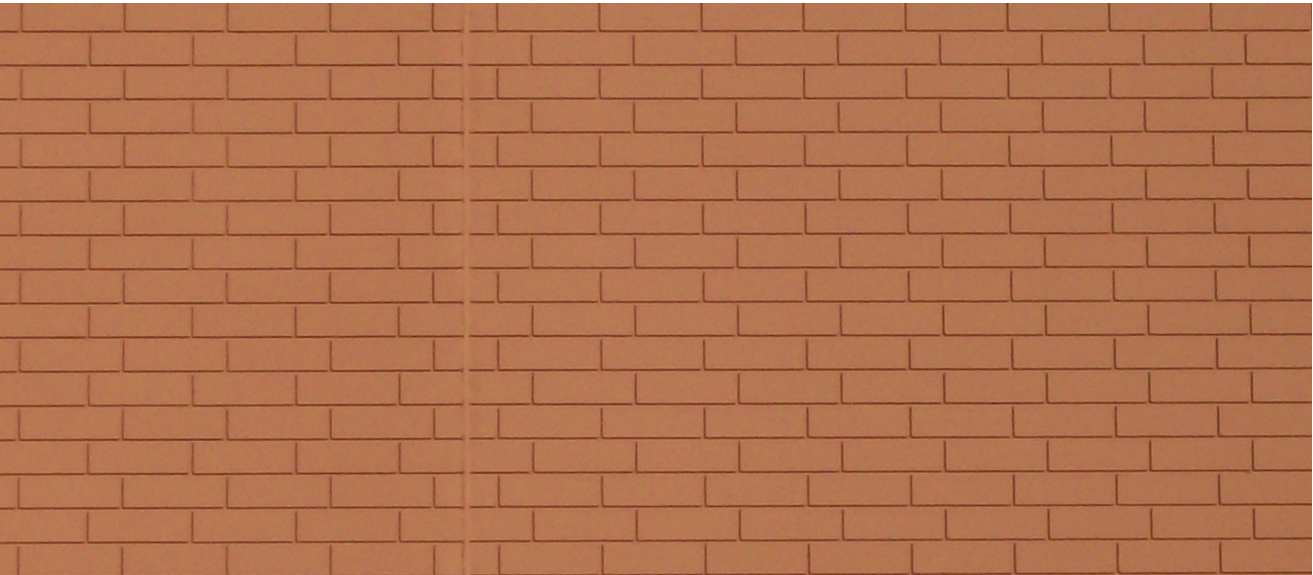
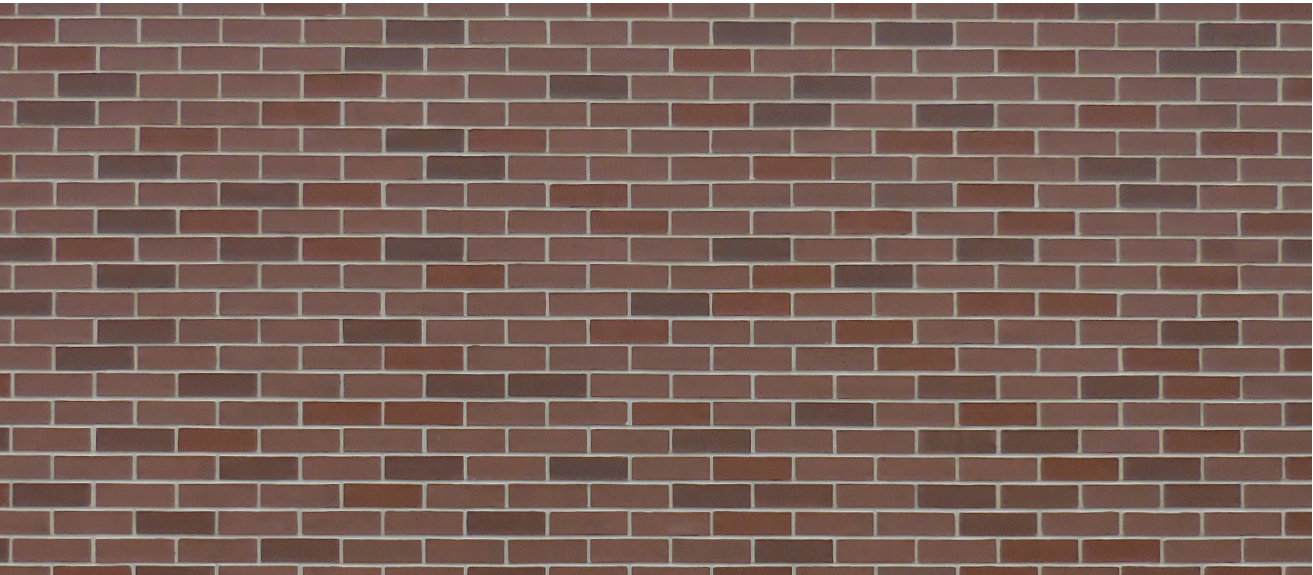
BRICK FORMLINER FINISH

After imprint, a brick formliner finish is the next most economical way to achieve brick look. The brick formliner finish offers sharper mortar lines and brick pattern. Brick and mortar lines can be painted various colors by hired professionals to enhance the appearance.

↓

\$\$\$

BEACON HEALTH SYSTEM | GRANGER, IN



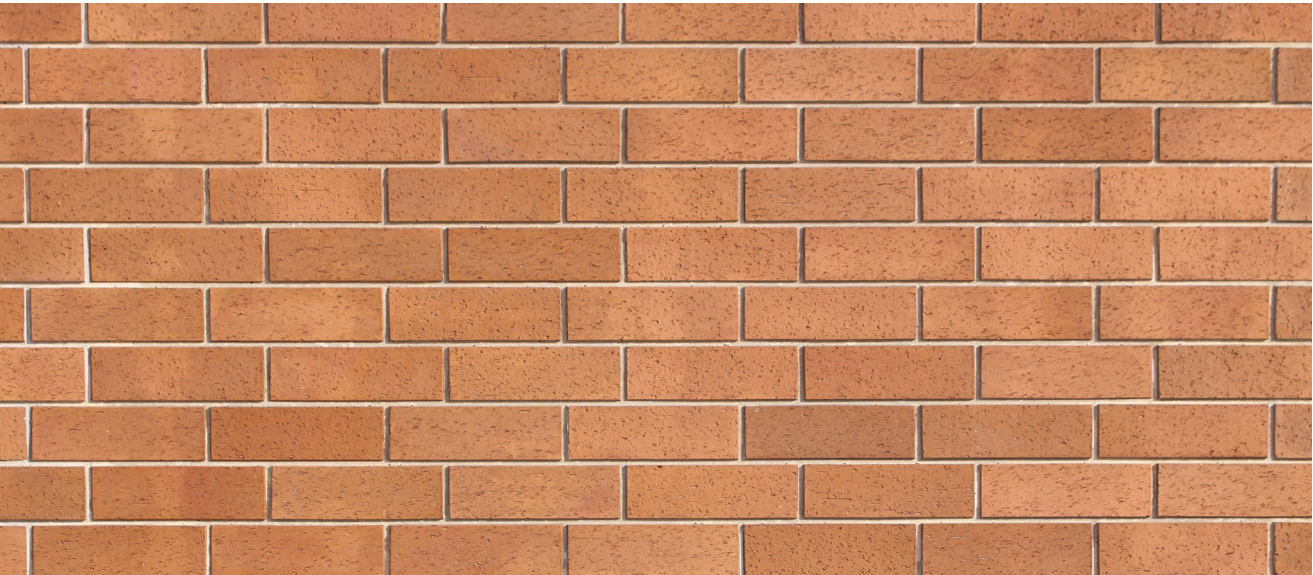
CAST-IN BRICK FINISH

This finish incorporates real fired thin brick with a dove tail backing, resulting in precast units with the look of real hand laid brick. Using form liners, brick can be placed in any pattern typical of full hand laid brick exterior. In addition to patterns, a wide variety of brick options are available. The combination of precast concrete and embedded thin brick elements allows the building to maintain a true brick exterior façade with all the benefits of precast construction.

↓

\$\$\$\$

MSU FEDERAL CREDIT UNION | GRAND RAPIDS, MI



FORM SIDE EXPOSED AGGREGATE FINISH

Form side exposed aggregate is a combination of steel form and exposed aggregate finishes. The same chemical process is used as top side exposed aggregate to reveal the natural appearance of the aggregate and matrix. Form side exposed aggregate provides a flatter surface and the ability to add reveals.



HOGLUND BUS COMPANY | MINNEAPOLIS, MN



SANDBLAST FINISH

Similar to form side exposed aggregate finish, sandblast finishes are used to expose the natural color of the aggregate on the form side of the panel. High-pressure air combined with an abrasive media, is used to expose the precast concrete matrix. This finish style allow the precast to have various levels of etch ranging from a light exposure to a deep, or heavy exposure. With the ability to use various levels of etching, the precast can have various colors and textures exposed with a single concrete mix design.

↓

\$\$\$\$

MSU PARKING DECK | LANSING, MI



LIGHT:

Occasionally refereed to as ‘brush blast’ this finish removes a minimal amount of matrix, resulting in a ‘sandpaper’ finish.



MEDIUM:

Medium sandblast exposes more of the larger aggregates that are deeper in the matrix providing more of the natural color of the aggregate.



HEAVY:

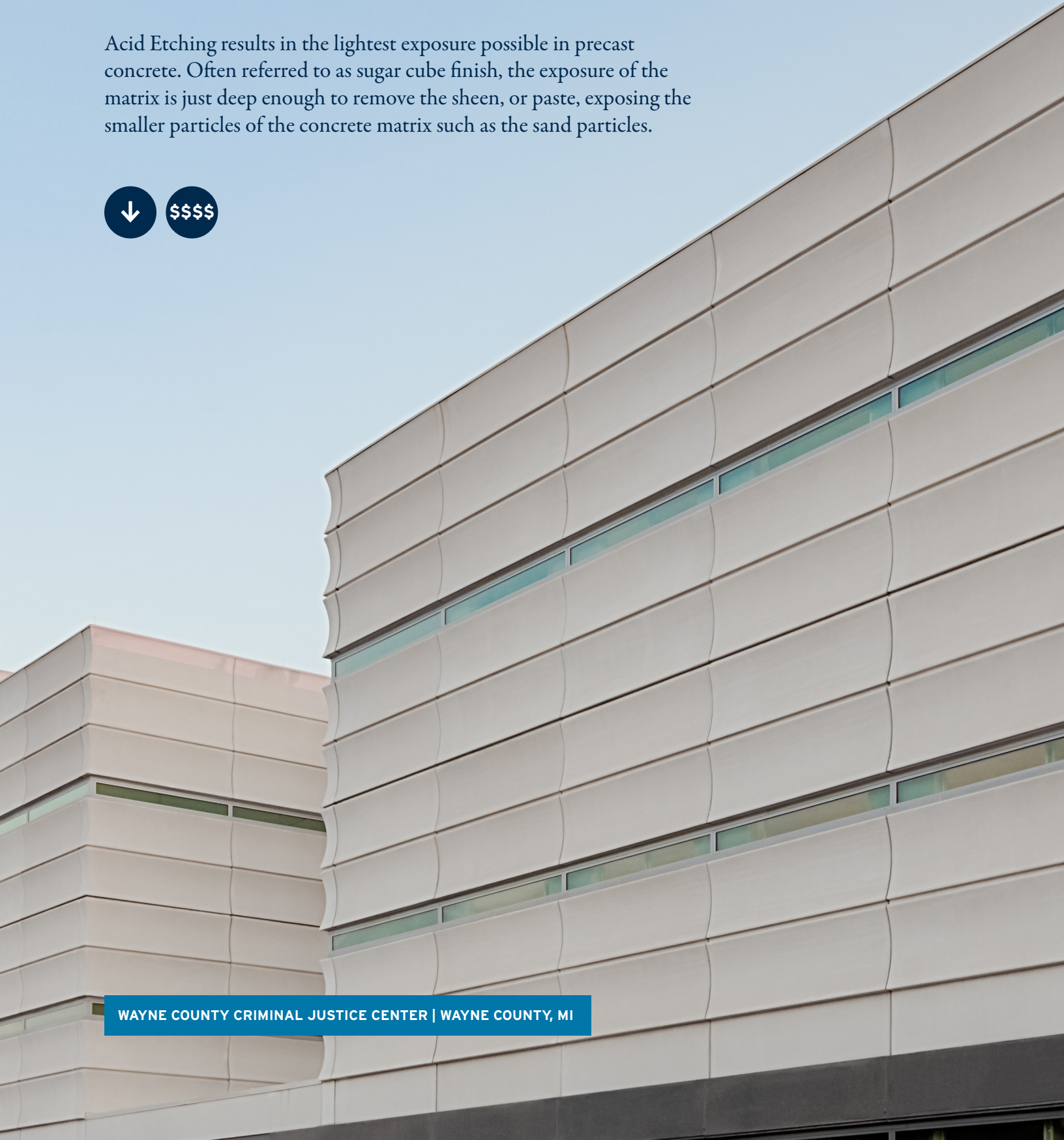
This aggressive finish exposes the maximum amount of the larger aggregates providing a deeper finishes smoother than exposed aggregate but rougher than light sandblast. This is the most forgiving of the finishes available.

ACID ETCHING FINISH

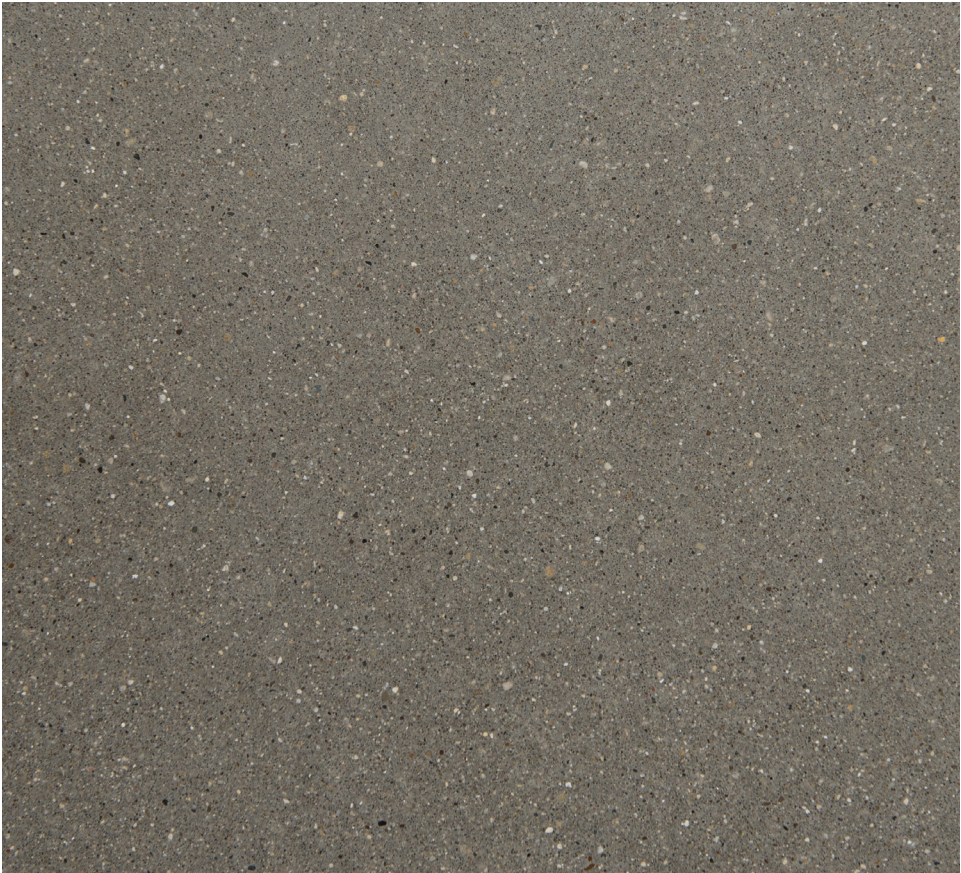
Acid Etching results in the lightest exposure possible in precast concrete. Often referred to as sugar cube finish, the exposure of the matrix is just deep enough to remove the sheen, or paste, exposing the smaller particles of the concrete matrix such as the sand particles.

↓

\$\$\$\$



WAYNE COUNTY CRIMINAL JUSTICE CENTER | WAYNE COUNTY, MI



LIGHT:

Light etch provides a smooth crisp finished appearance. This finish is sensitive to materials uses in the concrete mix design and is typically not use on large flat areas. This finish is best used in select areas or on panels that have relief in the face profile of the panel.



HEAVY:

Heavy etch provides a slightly rougher finish with a deeper exposure of the smaller aggregate in the matrix. This finish is typically used in conjunction with other finishes, or on panels with relief in the face profile. This finish is similar in exposure to the light sandblast finish.



READY TO TALK ABOUT YOUR NEXT PROJECT?

Whether you are an architect, developer, contractor or owner our precast concrete solutions open up endless possibilities for your project.



fabconprecast.com
800-727-4444

All rights reserved. ©2023 Fabcon Precast.

